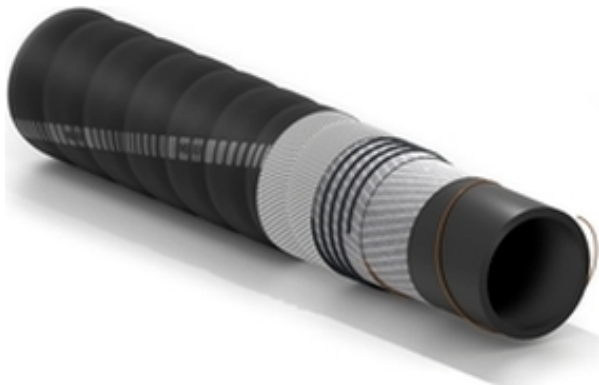


# Volga Ond

## Dredging suction and delivery hose



### Application:

hardwall corrugated hose used for the suction and delivery of sand and gravel mixed with water in dredging operations. Suitable when a considerable flexibility is required. Also available with: soft ends, enlarged ends, beaded ends or with built-in rubber protected flanges. Possible to order with: portions of integrated flotation or fully integrated flotation.

Suction and delivery hose  
Abrasion resistant  
Long lifespan

### Tube:

black, smooth, SBR/NR rubber, with good resistance to abrasion and lacerations.

### Reinforcement:

high strength synthetic cord plus steel helix wire and antistatic copper wire.

### Cover:

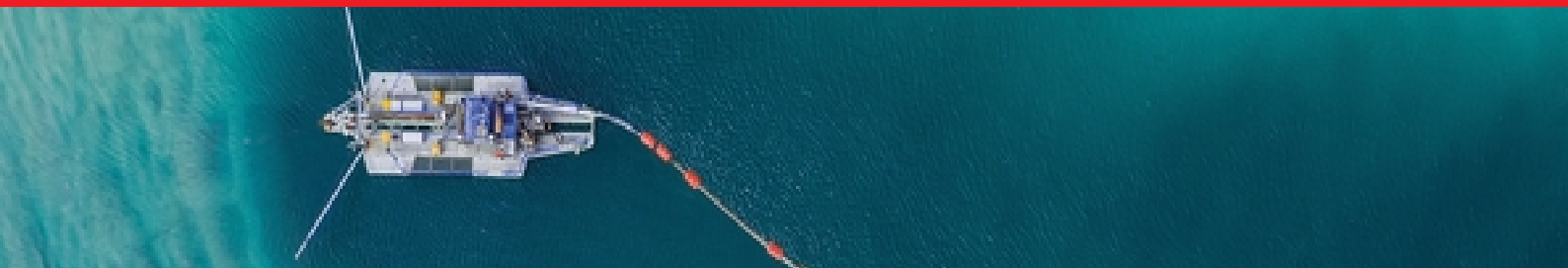
black, corrugated (wrapped finish), synthetic rubber, resistant to sea water, weathering and abrasion.

### Temperature:

from -40°C (-40°F) to +70°C (+158°F).



# Volga Ond



Code	Inside diameter		Working pressure		Burst pressure		Weight nominal		Bending radius		Vacuum	Length max	
	mm	inch	bar	psi	bar	psi	kg/m	lbs/ft	mm	inch	bar	m	ft
1315420	51	2	5	75	15	225	2,98	2,00	255	10,0	0,9	60	200
1367285	80	3,1	5	75	15	225	4,21	2,83	400	15,8	0,9	60	200
1220535	102	4	5	75	15	225	6,19	4,16	500	19,7	0,9	60	200
1086936	125	5	5	75	15	225	9,56	6,42	625	24,6	0,8	60	200
1379003	150	6	5	75	15	225	9,41	6,32	800	31,5	0,9	60	200
1459210	200	8	5	75	15	225	20,43	13,73	1200	47,3	0,9	60	200
1083074	250	10	5	75	15	225	23,27	15,64	1500	59,1	0,9	12	40
1241044	305	12	5	75	15	225	38,37	25,79	1800	70,9	0,9	12	40
1365053	350	14	5	75	15	225	44,24	29,73	2100	82,7	0,9	12	40
1431005	400	16	5	75	15	225	58	38,31	2400	94,6	0,9	12	40
1000300	450	18	5	75	15	225	56,10	37,70	2700	106,4	0,9	12	40
1430300	500	20	5	75	15	225	91,69	61,62	3000	118,2	0,9	12	40

## Variants available on request:

1. Different diameters.
2. Structure suitable for the assembly of clamps.

## SPECIAL DETAILS

### SAFETY INFORMATION – USER RESPONSIBILITIES

The service life of rubber hoses mainly depends on the dedicated use. Equipment and systems where the hose is installed must be designed safely. Since our hose can be designed for different applications, **IVG Colbachini** cannot guarantee the proper functioning of the product for all situations.

The analysis of the technical aspects related to specific uses must be performed by the users when choosing the product that meets their requirements. So, in relation to the variety of operating conditions and applications of the IVG hose, the user is solely responsible for the final choice of the product deemed suitable to satisfy the performance and safety requirements called for the application.

The information and technical data shown in the product data sheets must be examined by users with appropriate technical skills. IVG Colbachini is not responsible for other uses, identified by the end user, that are different from the one shown in its catalogues, product sheets, offers, order confirmations and any recommendations attached.

An inappropriate choice of the product or a failure to follow the procedures of installation, use, maintenance and storage of the hoses may lead to a hose break and cause material damage and/or serious injury to people.

For the selection and proper use of the IVG products you can also refer to the document "Recommendations for selection, storage, use and maintenance of rubber hoses" provided by Assogomma and available on [www.ivgspa.it](http://www.ivgspa.it). These recommendations are according to the international standard ISO 8331, "Plastic and rubber hoses and hose assemblies - Guidelines for selection, storage, use and maintenance."

**For safety reasons, never exceed the working pressure indicated in the product data sheet.**

For specific applications of rubber hoses, please refer to the legal requirements or specific standards; moreover, additional recommendations for particularly critical applications are available.

For further information, contact the Marketing department ([marketing@ivgspa.it](mailto:marketing@ivgspa.it)).