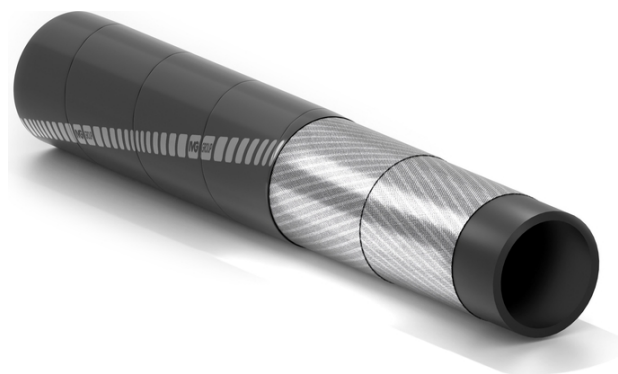


Victoria EN ISO 6134

Steam hose for 210°C



Application:

steel cord hose for saturated steam at a maximum working pressure 18 bar (261psi), used in the chemical industry, petrochemical and industrial applications in general. Not recommended for steam cleaner. The hose can be used for peaks of superheated steam at 230°C and at 18 bar. Attention: the use of superheated steam reduces the hose life. For longer life drain after use.

For steam up to +210°C

According to EN ISO 6134/17 type 2 class A (Ω)

Steel cord hose

Specifications:

EN ISO 6134:2017 TYPE 2 class A (Ω).



Tube:

black, smooth, EPDM rubber, resistant to saturated steam.

Reinforcement:

inserts of steel wire.

Cover:

black, pin pricked, smooth (wrapped finish), EPDM rubber with excellent resistance to high temperatures, weathering, abrasion, and ageing.

Temperature:

from -40°C (-40°F) to +210°C (+410°F).

Branding:

continuous embossed marking "IVG - EN ISO 6134:2017 - 2A - STEAM - 18 bar- 210°C - I.D. - Ω - quarter and year of manufacture".

Victoria EN ISO 6134



Code	Inside diameter		Outside diameter		Working pressure		Burst pressure		Weight nominal		Length max	
	mm	inch	mm	inch	bar	psi	bar	psi	kg/m	lbs/ft	m	ft
1186612	19	3/4	33	1,30	18	270	180	2700	0,78	0,52	60	200
1148133	25	1	39,5	1,56	18	270	180	2700	1,07	0,71	60	200
1228560	32	1-1/4	48	1,89	18	270	180	2700	1,4	0,94	60	200
1186299	38	1-1/2	54	2,13	18	270	180	2700	1,61	1,08	60	200
1187082	51	2	69	2,72	18	270	180	2700	2,56	1,73	60	200

Variants available on request:

1. Different diameters.
2. According to the standard BS 5342.
3. With red cover, according to EN ISO 6134, type M.

Recommended Couplings:



Steam coupling with clamp

