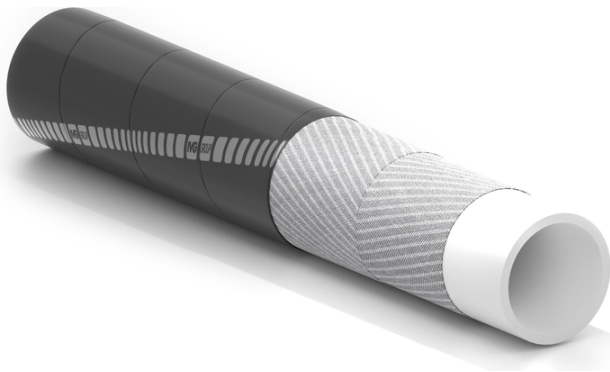


Gordon



Ex
zone

Dissipative hose with white tube for dry abrasives



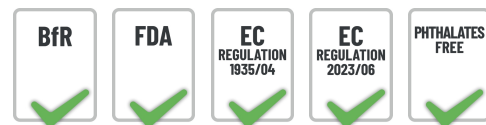
Application:

softwall, light, flexible and anti abrasive hose, suitable to convey with pneumatic system bulk abrasive products in the food industry, granules, dyes and PVC. Used in tank trucks, rail tankers and storage silos. Hose suitable for use in an ATEX environment. Tested by the notified body INERIS.

Dry abrasive food materials
 Dissipative suitable for ATEX environment
 Food regulation compliant

Specifications:

BfR XXI Cat. 4. FDA tit.21 art.177.2600 dry foods.
 Reg. EC 1935/2004. Reg. EC 2023/2006.
 Phthalates free (REACH Reg.).



Tube:

white, smooth, dissipative, food quality, synthetic rubber, resistant to abrasive dust and foodstuff.

Reinforcement:

high strength synthetic plies.

Cover:

black, smooth (wrapped finish), dissipative, synthetic rubber, resistant to ozone and weathering.

Temperature:

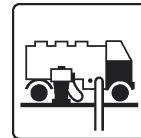
from -30°C (-22°F) to +80°C (+176°F).

Electrical resistance:

$R < 10^8 \Omega/\text{lengths}$ for lengths equal to or lower than 60 m.

Branding:

red transfer "IVG TRUCK (family logo)..."



Gordon



Code	Inside diameter		Outside diameter		Working pressure		Burst pressure		Weight nominal		Length max	
	mm	inch	mm	inch	bar	psi	bar	psi	kg/m	lbs/ft	m	ft
1470051	76	3	94	3,70	6	90	18	270	2,94	1,97	60	200
1480979	90	3-35/64	103,5	4,08	6	90	18	270	2,45	1,65	60	200
1469835	102	4	118	4,65	6	90	18	270	3,3	2,21	60	200
1471384	110	4-21/64	125	4,93	6	90	18	270	3,24	2,18	60	200
1400086	127	5	143	5,63	6	90	18	270	4,05	2,74	60	200

Variants available on request:

1. Different diameters.
2. Available at working pressure 10 bar.

Recommended Couplings:



Camlock



Flanges

SPECIAL DETAILS

NOTES AND SUGGESTIONS FOR THE END USERS FOR HOSE ASSEMBLIES INTENDED TO BE USED IN ATEX ENVIRONMENTS 2014/34/UE

Below are the notes for the proper use of the product in ATEX environments and warnings resulting from the risk analysis for the verification of effective ignition sources **regarding the hose assembly**.

Suggestions for a correct Risk Analysis are also given. There is no presumption that these suggestions could be exhaustive of every possible ATEX environment scenario in which the hose assembly could found, however the goal is to help the final user to carry out a correct Risk Analysis.

IVG Colbachini cannot, nor does it intend to, replace the Employer in his task of carrying out the Analysis. The aim is to help him in this activity.

The 1999/92/CE Directive (Minimum requirements for improving the safety and health protection of workers potentially at risk from explosive atmospheres) obliges the Employer to:

1. evaluate the risks of explosion considering the following:
 - likelihood and persistence of explosive atmospheres;
 - likelihood that ignition sources will be present including electrostatic discharge;
 - scale of possible effects;
 - characteristics of the plant, substances used, processes and possible interactions;
 - places that are or can be connected via openings with areas where explosive atmospheres are likely to generate.

2.To issue a document **“Explosion protection document”** (Risk Analysis).

3.To always update the “**Explosion protection document**” (Risk Analysis)

NOTE A – hot surfaces.

The hose does not contain heat sources, so the surface temperature of the hose depends strictly on the use by the end user. In the pneumatic conveying systems periodically check the integrity of the hose and its layers.

Do not use the use if the inner layer is heavily worn. The range of the working temperature of the material for which we guarantee the properties is according to the technical data sheet of the product.

Damage resulting from improper use of the product are not attributable to the manufacturer.

NOTE B – sparks of mechanical origin.

The hose has no moving parts and it is not able to generate this source of ignition. In the pneumatic conveying systems, it is likely that sparks are carried from earlier process operations and not due to the hose itself. It is the end user's responsibility to operate so that this source of ignition is not present, internally and externally to the hose.

NOTE C – electrical equipment.

There are no electrical materials provided with the hose. The possible steel helix wire (if present between the layers of the hose) has been designed, to impart mechanical strength to the hose. The helix wire is not intended as an electrical conductor, but it can help the dispersion of electrostatic charges if and only if it is correctly connected to the ground line or to equipotential bonding jumpers with equipment already connected to the ground line.

NOTE D – eddy currents.

This ignition source is not applicable to the hose in question. The end user must operate so that the hose is not isolated from sections of insulating hoses. The hose, thanks to its conductive/dissipative characteristics is able to disperse possible electric/electrostatic charges accumulated during the process if and only if the hose is properly connected to the ground line.

NOTE E – electrostatic charges.

The hose does not contain or inherently generates electrostatic ignition sources. Eventual generation and accumulation of charges may depend on the material transported in the process and the ability of the material, properly connected with equipotential connections and/or connections with grounding, to be able to drain them. Care should be taken in the perfect cleaning and maintenance of connections and periodic assessment of the earth resistance that can detect anomalies in the system. The material the hose is made of has been designed to maximize the dispersion of electrostatic charges that can be generated due to the process. The nonapplication of these notes and improper use of the product as designed, absolve the manufacturer from any responsibility for any damage that may result. According to the characteristics and needs of the process that may generate internal and external hazardous atmospheres, detailed studies should be performed by experienced staff to guarantee a proper use of the product.

The concepts, recommendations, references and the limits reported in the following standards are extremely important in order to carry out a detailed study:

- CEI CLC/TR 60079-32-1:2016 – Electrostatics – Code of practice for the avoidance of hazards due to static electricity.
- NFPA 77 - 2014 - Recommended Practice on Static Electricity.
- UNI CEI EN ISO 80079-36:2016 – Explosive atmospheres - Part 36: Non-electrical equipment intended for explosive atmospheres - Basic method and requirements.
- UNI CEI EN ISO 80079-37:2016 – Explosive atmospheres - Part 37: Non-electrical equipment intended for explosive atmospheres - Type of non-electrical protection for constructive safety "c", for ignition source control "b", by immersion in liquid "k".
- UNI EN 1127-1/2011 Explosive atmospheres. Explosion prevention and protection – Part 1: Basic concepts and methodology.

NOTE F – adiabatic compression and shockwaves.

It is not applicable to the supplied hose. The possible releases of gas at high speed can only be caused by the process. The user must assess the possible presence of this ignition source before putting the hose into use.

The use of the product / hose as pneumatic conveying equipment brings the transport of embers generated in the connected process equipment.

We suggest checking the presence of ultrasonic waves as they may, in extreme cases, cause the ignition of a liquid or solid substance.

SPECIAL DETAILS

CIP and advice to users on hoses in contact with food

Sanitation

- IVG recommends for the first use a wash cycle with potable water at a maximum temperature of 80°C/90°C and a hose sanitation as reported above before conveying food products.
- At the end of each cycle the equipment and hose assemblies must be cleaned and disinfected.
- Strictly follow the times indicated for each cleaning cycle.
- Do not immerse hose assembly in the sanitation fluid because only the inner tube is suitable for contact with the below mentioned solvents.
- Every cleaning cycle must be immediately followed by a complete rinse.
- Do not exceed 3 bar working pressure in CIP systems.

HOSE*	Hot Water	Steam open end	H2O2 1%	H2O2 3%	Peracetic Acid 0.1%	Peracetic Acid 0.5%	Phosphoric Acid 5%	Chlorine 1%	NaOH 2%	NaOH 5%	Nitric Acid 0.1%	Nitric Acid 3%
FOOD CANA TRUCK FOODFLEX/IIIR FOOD SCOTLAND FOOD TUSCANY FOOD VINOFLUX	90°C 8 hours	Max 130°C 30 minutes	Max 70°C 15 minutes	Max 30°C 15 minutes	Max 50°C 15 minutes	Max 30°C 15 minutes	Max 80°C 15 minutes	Max 80°C 15 minutes	Max 80°C 15 minutes	Max 30°C 15 minutes	Max 70°C 15 minutes	Max 30°C 15 minutes
FOOD DAMASCO FOOD DIJON FOOD MILLENNIUM	80°C 8 hours	Max 110°C 15 minutes	Max 50°C 10 minutes	Max 30°C 10 minutes	Max 30°C 10 minutes	Max 30°C 10 minutes	Max 50°C 15 minutes	Max 70°C 15 minutes	Max 70°C 10 minutes	Max 30°C 10 minutes	Max 50°C 10 minutes	Max 30°C 10 minutes
TRUCK FOODFLEX	80°C 8 hours	Max 110°C 15 minutes	Max 50°C 10 minutes	Max 30°C 10 minutes	Max 30°C 10 minutes	Max 30°C 10 minutes	Max 50°C 15 minutes	Max 70°C 15 minutes	Max 70°C 10 minutes	Max 30°C 10 minutes	Max 50°C 10 minutes	Max 30°C 10 minutes
FOOD ALICANTE FOOD MILKPLUS LL	90°C 8 hours	Max 130°C 30 minutes	Max 70°C 15 minutes	Max 30°C 15 minutes	Max 50°C 15 minutes	Max 30°C 15 minutes	Max 80°C 15 minutes	Max 80°C 15 minutes	Max 80°C 15 minutes	Max 30°C 15 minutes	Max 70°C 15 minutes	Max 30°C 15 minutes
FOOD OILMILL	80°C 8 hours	Max 110°C 10 minutes	Max 50°C 10 minutes	Max 30°C 10 minutes	Max 30°C 10 minutes	Max 30°C 10 minutes	Max 50°C 10 minutes	Max 70°C 10 minutes	Max 70°C 10 minutes	Max 30°C 10 minutes	Max 50°C 10 minutes	Max 30°C 10 minutes
FOOD ACQUABLU	80°C 8 hours	Max 110°C 30 minutes	Max 80°C 30 minutes	Max 50°C 30 minutes	Max 70°C 30 minutes	Max 50°C 30 minutes	Max 80°C 30 minutes	Max 80°C 30 minutes	Max 80°C 30 minutes	Max 50°C 30 minutes	Max 80°C 30 minutes	Max 50°C 30 minutes
CHEM CLEARCOND FOOD SHETLAND CHEM SUPERTOP UPE CHEM THUNDERFLEX	90°C 12 hours	Max 130°C 30 minutes	Max 80°C 30 minutes	Max 50°C 30 minutes	Max 70°C 30 minutes	Max 50°C 30 minutes	Max 80°C 30 minutes	Max 80°C 30 minutes	Max 80°C 30 minutes	Max 50°C 30 minutes	Max 80°C 30 minutes	Max 50°C 30 minutes
TRUCK DON/BN TRUCK GORDON	80°C 8 hours	Max 110°C 15 minutes	Max 50°C 10 minutes	Max 30°C 10 minutes	Max 30°C 10 minutes	Max 30°C 10 minutes	Max 50°C 15 minutes	Max 70°C 15 minutes	Max 70°C 15 minutes	Max 30°C 10 minutes	Max 50°C 10 minutes	Max 30°C 10 minutes

*The indications regarding hoses on this list refer to the product code found in the IVG catalogue www.ivgspa.it.

General advice

- Hoses are not meant to permanently contain the products they convey.
- Store hoses away from direct sunlight and heat. When not in use store hoses with perforated plugs at both ends.
- Before every use check the hose condition. The hose cover, especially in the fitting area, should show no signs of cuts, tears, or bubbles. There should be no hard or weak areas, signs of detachment or collapse.
- Remember to guarantee traceability of every single piece of hose put into the market (Reg. EC 1935/2004, EC 2023/2006).

