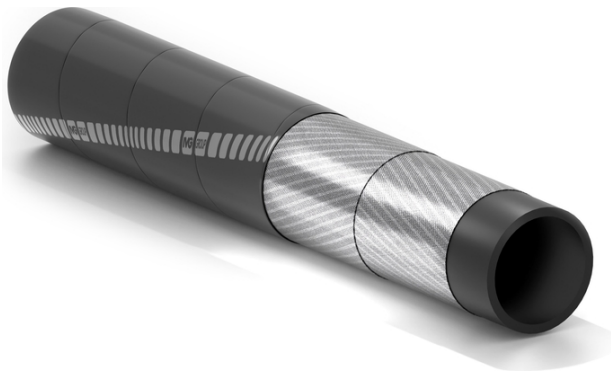


# Victoria

## Steam hose for 210°C



**Application:**

steel cord hose for saturated steam at a maximum working pressure 18 bar (261psi), used in the chemical industry, petrochemical and industrial applications in general. Not recommended for steam cleaner. The hose can be used for peaks of superheated steam at 230°C and at 18 bar. Attention: the use of superheated steam reduces the hose life. For longer life drain after use.

For steam up to +210°C  
Steel cord hose  
with pin pricked cover

**Tube:**

black, smooth, EPDM rubber, resistant to saturated steam.

**Reinforcement:**

inserts of steel wire.

**Cover:**

black, pin pricked, smooth (wrapped finish), EPDM rubber with excellent resistance to high temperatures, weathering, abrasion and ageing.

**Temperature:**

from -40°C (-40°F) to +210°C (+410°F).

**Branding:**

embossed marking "IVG Steam Victoria...".



# Victoria



Code	Inside diameter		Outside diameter		Working pressure		Burst pressure		Weight nominal		Length max	
	mm	inch	mm	inch	bar	psi	bar	psi	kg/m	lbs/ft	m	ft
1113615	10	25/64	21	0,83	18	270	180	2700	0,37	0,25	120	400
1236580	13	1/2	25	0,99	18	270	180	2700	0,51	0,34	120	400
1209990	16	5/8	28	1,10	18	270	180	2700	0,59	0,39	120	400
1180070	19	3/4	31	1,22	18	270	180	2700	0,67	0,44	120	400
1186280	25	1	37	1,46	18	270	180	2700	0,89	0,59	120	400
1188437	32	1-1/4	46,5	1,83	18	270	180	2700	1,3	0,87	120	400
1221566	51	2	66,5	2,62	18	270	180	2700	2,25	1,53	60	200
1147579	63,5	2-1/2	81,5	3,21	18	270	180	2700	3,36	2,24	60	200
1210610	76	3	96,5	3,80	18	270	180	2700	4,38	2,92	60	200

**Variants available on request:**

1. Victoria with tube in accordance to FDA, W.P. 6 bar
2. Different diameters
3. Red cover.

**Recommended Couplings:**



Steam coupling with clamp

## SPECIAL DETAILS

### WARNINGS AND PRECAUTIONS

Rubber hoses have a service life proportional to their usage.

The equipment and systems where the hose is installed must be designed to ensure safe operation. Given the wide range of possible applications, IVG Colbachini does not guarantee suitability for all specific uses. The selection of the most appropriate product for the intended application, ensuring the required performance and safety standards, is the sole responsibility of the user.

IVG Colbachini shall therefore not be held liable for any use other than those indicated in its catalogues, product data sheets, quotations, order confirmations, or any accompanying recommendations.

Improper product selection and/or use, or failure to comply with installation, operation, maintenance, and storage procedures, may result in hose failure and cause damage to property or personal injury.

---

IVG Colbachini manufactures and markets both assembled hoses and hoses supplied without fittings.

#### Assembled Hoses

Before being placed on the market, the hose assembly is subjected by IVG to manufacturing control tests carried out by qualified personnel.

IVG declines all responsibility for any subsequent modifications, disassembly, or reinstallation of fittings performed by the user, as well as for uses that differ from those indicated in the product data sheet or in the absence of maintenance programs and periodic inspections.

#### Hoses and Fittings as spare parts

The user is responsible for assembling the hose and fittings, ensuring proper hose/fitting compatibility and compliance with the technical specifications for use. It is recommended that the hose assembly be subjected to a pressure tightness test carried out by qualified personnel.

IVG declines all responsibility in this regard.

#### Precautions

For proper selection and correct use of IVG products, reference should also be made to the recommendations issued by Assogomma, available at [www.ivgspa.it](http://www.ivgspa.it), in accordance with ISO 8331 regarding installation, maintenance, methods and duration of use, as well as fitting stability and tightness.

**For safety reasons, the working pressure indicated in the product technical data sheet must never be exceeded.**

**In general, continuous operation at maximum allowable pressure and/or temperature may significantly reduce the hose service life. Regular inspections and hydrostatic testing at the specified test pressure must therefore be carried out. Hydrostatic tests must be performed by adequately trained personnel using suitable equipment and in accordance with recognized testing standards.**

For specific applications of rubber hoses, reference should be made to applicable legal requirements or compliance standards. Additional recommendations are available for particularly critical applications. For further information, please contact [info@ivgspa.it](mailto:info@ivgspa.it).