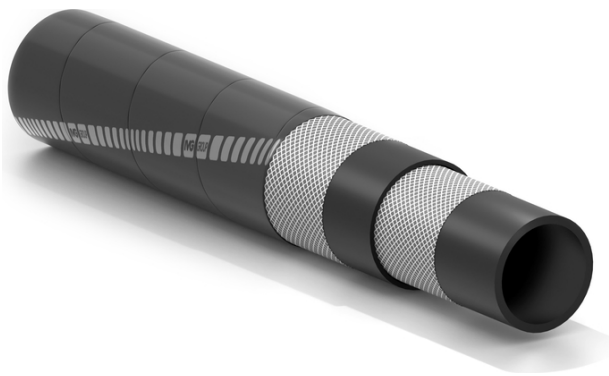


Railflex

Railroad bristle hose



Application:

softwall hose designed to remove excess of ballast from railroads.

Suitable to remove excess of ballast
Abrasion resistant
Length up to 120 m

Tube:

black, smooth, SBR/NR rubber, abrasion resistant.

Reinforcement:

special synthetic cord, divided by layers of rubber.

Cover:

black, smooth (wrapped finish), SBR/NR rubber, abrasion resistant.

Temperature:

from -40°C (-40°F) to +70°C (+158°F).



Railflex



Code	Inside diameter		Outside diameter		Weight nominal		Length max	
	mm	inch	mm	inch	kg/m	lbs/ft	m	ft
1326350	32	1-1/4	52	2,05	1,35	0,91	120	400
1308718	32	1-1/4	53	2,09	1,42	0,95	120	400
1327569	32	1-1/4	55	2,17	1,64	1,10	120	400
1320645	35	1-3/8	58	2,29	1,75	1,18	120	400

Variants available on request:

1. Different diameters.
2. Structure without textile reinforcements.

