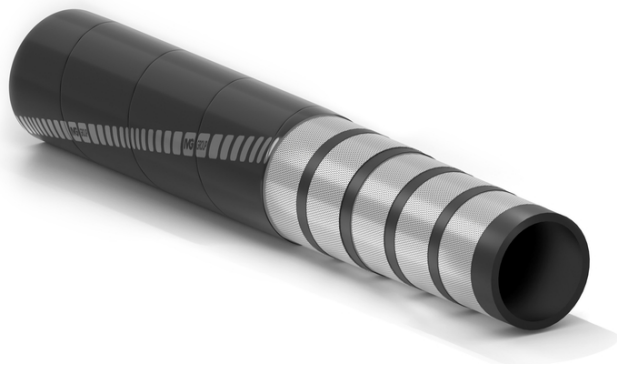


Dragasteel

Discharge line hose in dredging operations



Application:

heavy duty steel cord hose used as a flexible connection in discharge lines. Used in heavy-duty applications for delivery of sand, gravel and debris mixed with water.

Also available with: enlarged ends or built-in fittings with rubber protected flanges. Possible to order with: portions of integrated flotation or fully integrated flotation.

Plies of steel wire cord
Resistant to abrasion and sea water
Heavy duty

Tube:

black, smooth, SBR/NR rubber with excellent resistance to abrasion and lacerations.

Reinforcement:

plies of steel wire cord divided by layers of rubber to improve the hose flexibility.

Cover:

black, smooth (wrapped finish), synthetic rubber, highly resistant to sea water, weathering and abrasion.

Temperature:

from -40°C (-40°F) to +70°C (+158°F).



Dragasteel



Code	Inside diameter		Outside diameter		Working pressure		Burst pressure		Weight nominal		Flexibility	Length max	
	mm	inch	mm	inch	bar	psi	bar	psi	kg/m	lbs/ft		°/m	m
1397338	200	8	246	9,69	15	225	45	675	20,69	13,90	38	12	40
1272233	254	10	310	12,21	15	225	45	675	31,31	21,04	35	12	40
1327852	300	12	354	13,95	15	225	45	675	34,74	23,35	32	12	40
1360523	350	14	401	15,80	15	225	45	675	40,93	27,51	29	12	40
1210254	400	16	446	17,57	15	225	45	675	41,84	28,31	27	12	40
1204645	450	18	496	19,54	15	225	45	675	46,76	31,65	22	12	40
1211285	500	20	559	22,02	15	225	45	675	75,74	50,90	17	12	40
1362259	590	23,25	666	26,24	15	225	45	675	108,41	72,85	12	12	40

Variants available on request:

1. Different diameters.

SPECIAL DETAILS

WARNINGS AND PRECAUTIONS

Rubber hoses have a service life proportional to their usage.

The equipment and systems where the hose is installed must be designed to ensure safe operation. Given the wide range of possible applications, IVG Colbachini does not guarantee suitability for all specific uses. The selection of the most appropriate product for the intended application, ensuring the required performance and safety standards, is the sole responsibility of the user.

IVG Colbachini shall therefore not be held liable for any use other than those indicated in its catalogues, product data sheets, quotations, order confirmations, or any accompanying recommendations.

Improper product selection and/or use, or failure to comply with installation, operation, maintenance, and storage procedures, may result in hose failure and cause damage to property or personal injury.

IVG Colbachini manufactures and markets both assembled hoses and hoses supplied without fittings.

Assembled Hoses

Before being placed on the market, the hose assembly is subjected by IVG to manufacturing control tests carried out by qualified personnel.

IVG declines all responsibility for any subsequent modifications, disassembly, or reinstallation of fittings performed by the user, as well as for uses that differ from those indicated in the product data sheet or in the absence of maintenance programs and periodic inspections.

Hoses and Fittings as spare parts

The user is responsible for assembling the hose and fittings, ensuring proper hose/fitting compatibility and compliance with the technical specifications for use. It is recommended that the hose assembly be subjected to a pressure tightness test carried out by qualified personnel.

IVG declines all responsibility in this regard.

Precautions

For proper selection and correct use of IVG products, reference should also be made to the recommendations issued by Assogomma, available at www.ivgspa.it, in accordance with ISO 8331 regarding installation, maintenance, methods and duration of use, as well as fitting stability and tightness.

For safety reasons, the working pressure indicated in the product technical data sheet must never be exceeded.

In general, continuous operation at maximum allowable pressure and/or temperature may significantly reduce the hose service life. Regular inspections and hydrostatic testing at the specified test pressure must therefore be carried out. Hydrostatic tests must be performed by adequately trained personnel using suitable equipment and in accordance with recognized testing standards.

For specific applications of rubber hoses, reference should be made to applicable legal requirements or compliance standards. Additional recommendations are available for particularly critical applications. For further information, please contact info@ivgspa.it.