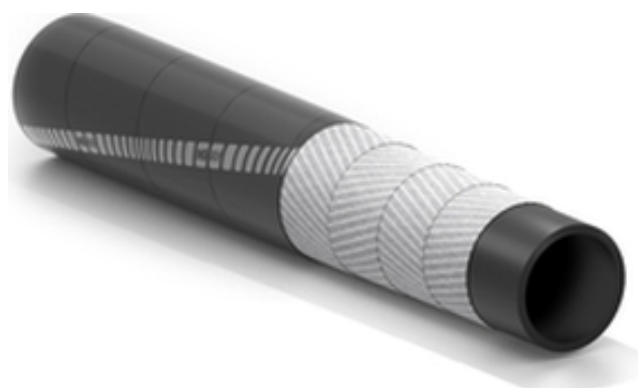


Amalfi cord



Напорный рукав для отвода выхлопных газов, смешанных с морской водой



Применение:

напорный рукав для отвода выхлопных газов, смешанных с морской водой, предназначен для прогулочных катеров длиной до 24 метров.

разные диаметры
одобрен RINA и Lloyd's
максимальная длина до 120м

Нормативно-правовые акты:

ISO 13363:2016 кат. 1B одобрено RINA с Lloyd's.
SAE J 2006:2013 кат. R1 Одобрено RINA с Lloyd's.



Внутренний слой:

чёрный, гладкий из синтетического каучука, устойчивый к выхлопным газам.

Усиление:

высокопрочный синтетический корд.

Покрытие:

чёрное, гладкое (с отпечатком текстильного бандажа), из синтетического маслостойкого каучука, устойчивое к атмосферным воздействиям.

Температура:

от -30°C до +100°C.

Маркировка:

красная марк.лента: IVG BOAT AMALFI CORD
MARINE WET EXHAUST B.P. 2,5 bar 37,5 psi
-30°C+100°C -22°F+212°F RINA
DIP437423CS/001 ISO 13363:16 1B LLOYD'S
LR2536277TA SAE J 2006:13 R1 I.D. M/Y.

Amalfi cord



Код	Внутренний диаметр		Внешний диаметр		Разрывное давление		Номинальный вес		Максимальная длина	
	mm	inch	mm	inch	bar	psi	kg/m	lbs/ft	m	ft
1491822	19	3/4	29	1,14	2,5	38	0,44	0,30	120	400
1459503	38	1 1/2	48	1,89	2,5	38	0,78	0,52	120	400
1456490	51	2	61	2,40	2,5	38	1,02	0,69	120	400
1439715	76	3	86	3,39	2,5	38	1,47	0,99	120	400
1439774	102	4	114,5	4,51	2,5	38	2,35	1,58	120	400
1456474	130	5 1/8	146	5,75	2,5	38	3,73	2,51	120	400
1448803	152	6	168	6,61	2,5	38	4,32	2,90	120	400
1456466	160	6 19/64	176	6,93	2,5	38	4,54	3,05	60	200
1468677	182	7 11/64	202	7,95	2,5	38	6,75	4,54	60	200
1441051	203	8	223	8,78	2,5	38	7,49	5,03	60	200
1466526	254	10	274	10,79	2,5	38	9,28	6,24	60	200
1441540	300	11 13/16	321	12,64	2,5	38	11,3	7,59	12	40

SPECIAL DETAILS

SAFETY INFORMATION – USER RESPONSIBILITIES

The service life of rubber hoses mainly depends on the dedicated use. Equipment and systems where the hose is installed must be designed safely. Since our hose can be designed for different applications, **IVG Colbachini** cannot guarantee the proper functioning of the product for all situations.

The analysis of the technical aspects related to specific uses must be performed by the users when choosing the product that meets their requirements. So, in relation to the variety of operating conditions and applications of the IVG hose, the user is solely responsible for the final choice of the product deemed suitable to satisfy the performance and safety requirements called for the application.

The information and technical data shown in the product data sheets must be examined by users with appropriate technical skills. IVG Colbachini is not responsible for other uses, identified by the end user, that are different from the one shown in its catalogues, product sheets, offers, order confirmations and any recommendations attached.

An inappropriate choice of the product or a failure to follow the procedures of installation, use, maintenance and storage of the hoses may lead to a hose break and cause material damage and/or serious injury to people.

For the selection and proper use of the IVG products you can also refer to the document "Recommendations for selection, storage, use and maintenance of rubber hoses" provided by Assogomma and available on www.ivgspa.it. These recommendations are according to the international standard ISO 8331, "Plastic and rubber hoses and hose assemblies - Guidelines for selection, storage, use and maintenance."

For safety reasons, never exceed the working pressure indicated in the product data sheet.

For specific applications of rubber hoses, please refer to the legal requirements or specific standards; moreover, additional recommendations for particularly critical applications are available.

For further information, contact the Marketing department (marketing@ivgspa.it).