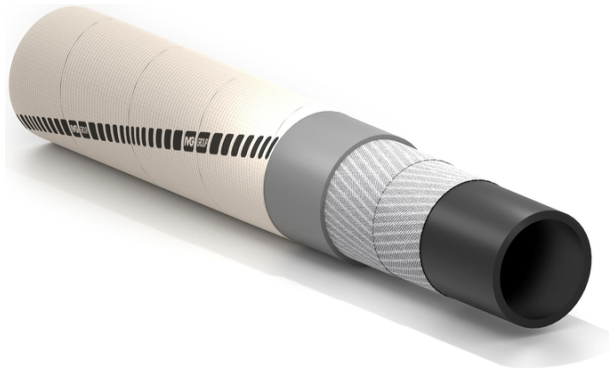


Essen

Cooling water discharge hose with fibre glass cover



Application:

softwall hose for discharge of cooling water in steel mills, foundries, and in all cases where a rubber hose is working close to sources of heat. Resistant against splashes of white hot metal.

It resists radiant heat up to +530°C
Length up to 120 m
Perfect vulcanization

Tube:

black, smooth, EPDM rubber.

Reinforcement:

high strength synthetic cord.

Cover:

covered with fibre glass, vulcanized, heat resistant. The fibre glass cover resists radiant heat up to +530°C (+986°F).

Temperature:

from -40°C (-40°F) to +120°C (+248°F).



Essen



| Code | Inside diameter | | Outside diameter | | Working pressure | | Burst pressure | | Weight nominal | | Length max | |
|---------|-----------------|-------|------------------|------|------------------|-----|----------------|-----|----------------|--------|------------|-----|
| | mm | inch | mm | inch | bar | psi | bar | psi | kg/m | lbs/ft | m | ft |
| 1345621 | 13 | 1/2 | 22 | 0,87 | 10 | 150 | 30 | 450 | 0,31 | 0,21 | 120 | 400 |
| 1308424 | 16 | 5/8 | 26,5 | 1,04 | 10 | 150 | 30 | 450 | 0,43 | 0,29 | 120 | 400 |
| 1244612 | 19 | 3/4 | 30,5 | 1,20 | 10 | 150 | 30 | 450 | 0,56 | 0,38 | 120 | 400 |
| 1297112 | 25 | 1 | 38,5 | 1,52 | 10 | 150 | 30 | 450 | 0,85 | 0,57 | 120 | 400 |
| 1308432 | 32 | 1-1/4 | 43 | 1,69 | 10 | 150 | 30 | 450 | 0,8 | 0,54 | 120 | 400 |
| 1297090 | 38 | 1-1/2 | 57,5 | 2,27 | 10 | 150 | 30 | 450 | 1,81 | 1,22 | 120 | 400 |
| 1368729 | 51 | 2 | 64,5 | 2,54 | 10 | 150 | 30 | 450 | 1,5 | 1,01 | 120 | 400 |
| 1308408 | 63,5 | 2-1/2 | 79 | 3,11 | 10 | 150 | 30 | 450 | 2,2 | 1,48 | 120 | 400 |
| 1348531 | 76 | 3 | 95,5 | 3,76 | 10 | 150 | 30 | 450 | 3,17 | 2,13 | 120 | 400 |
| 1314408 | 102 | 4 | 119,5 | 4,71 | 10 | 150 | 30 | 450 | 3,68 | 2,47 | 120 | 400 |

Variants available on request:

1. Different diameters.
2. Different working pressures.
3. Essen/insulating with electrical resistance $\geq 1 \times 10^8 \Omega/m$.
4. Essen/insulating/CR electrically isolating, with further CR rubber cover with fire resistant characteristics according to ASTM C 542.

SPECIAL DETAILS

WARNINGS AND PRECAUTIONS

Rubber hoses have a service life proportional to their usage.

The equipment and systems where the hose is installed must be designed to ensure safe operation. Given the wide range of possible applications, IVG Colbachini does not guarantee suitability for all specific uses. The selection of the most appropriate product for the intended application, ensuring the required performance and safety standards, is the sole responsibility of the user.

IVG Colbachini shall therefore not be held liable for any use other than those indicated in its catalogues, product data sheets, quotations, order confirmations, or any accompanying recommendations.

Improper product selection and/or use, or failure to comply with installation, operation, maintenance, and storage procedures, may result in hose failure and cause damage to property or personal injury.

IVG Colbachini manufactures and markets both assembled hoses and hoses supplied without fittings.

Assembled Hoses

Before being placed on the market, the hose assembly is subjected by IVG to manufacturing control tests carried out by qualified personnel.

IVG declines all responsibility for any subsequent modifications, disassembly, or reinstallation of fittings performed by the user, as well as for uses that differ from those indicated in the product data sheet or in the absence of maintenance programs and periodic inspections.

Hoses and Fittings as spare parts

The user is responsible for assembling the hose and fittings, ensuring proper hose/fitting compatibility and compliance with the technical specifications for use. It is recommended that the hose assembly be subjected to a pressure tightness test carried out by qualified personnel.

IVG declines all responsibility in this regard.

Precautions

For proper selection and correct use of IVG products, reference should also be made to the recommendations issued by Assogomma, available at www.ivgspa.it, in accordance with ISO 8331 regarding installation, maintenance, methods and duration of use, as well as fitting stability and tightness.

For safety reasons, the working pressure indicated in the product technical data sheet must never be exceeded.

In general, continuous operation at maximum allowable pressure and/or temperature may significantly reduce the hose service life. Regular inspections and hydrostatic testing at the specified test pressure must therefore be carried out. Hydrostatic tests must be performed by adequately trained personnel using suitable equipment and in accordance with recognized testing standards.

For specific applications of rubber hoses, reference should be made to applicable legal requirements or compliance standards. Additional recommendations are available for particularly critical applications. For further information, please contact info@ivgspa.it.