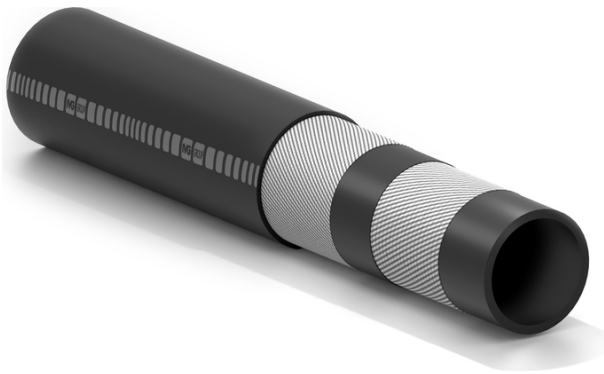


Multiform black 20

Extruded hose for hot water and non aggressive fluids



Application:

designed to convey hot water, fluids even slightly acidic and non aggressive in chemical industries.

Extruded hose
Multi-service hose
Long lifespan

Tube:

black, seamless EPDM rubber compound.

Reinforcement:

high strength synthetic fabrics.

Cover:

black, seamless, ageing, ozone, weathering-resistant, EPDM rubber compound.

Temperature:

from -40°C (-40°F) to +120°C (+248°F).

Branding:

IVG RUBBER HOSE MULTIFORM BLACK 20
BAR W.P. TEMP. 120°C (+248°F) - SIZE -
BATCH NUMBER.



Multiform black 20



Code	Inside diameter		Outside diameter		Working pressure		Burst pressure		Weight nominal		Bending radius		Length max	
	mm	inch	mm	inch	bar	psi	bar	psi	kg/m	lbs/ft	mm	inch	m	ft
1447599	6	17/72	14	0,55	20	300	60	900	0,16	0,11	60	2,4	100	328
1447602	7	8/29	16	0,63	20	300	60	900	0,2	0,13	60	2,4	100	328
1447610	8	5/16	17	0,67	20	300	60	900	0,22	0,14	65	2,6	100	328
1447629	10	25/64	19	0,75	20	300	60	900	0,26	0,16	80	3,2	100	328
1448137	13	1/2	21	0,83	20	300	60	900	0,26	0,18	105	4,1	60	200
1447637	13	1/2	23	0,91	20	300	60	900	0,34	0,23	105	4,1	60	200
1448080	16	5/8	25	0,99	20	300	60	900	0,36	0,24	130	5,1	60	200
1448099	19	3/4	29	1,14	20	300	60	900	0,47	0,31	150	5,9	60	200
1447653	19	3/4	30	1,18	20	300	60	900	0,53	0,34	150	5,9	60	200

