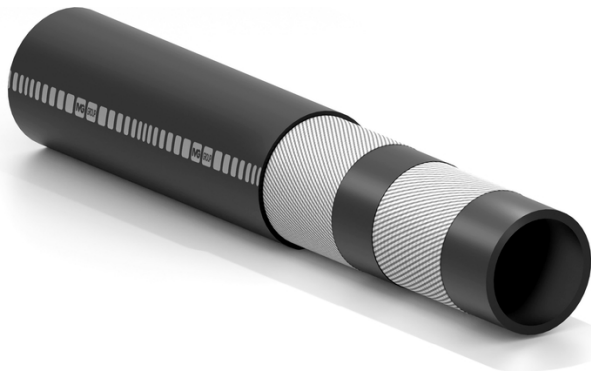


Air Water 20

Extruded hose for air and water



Application:

designed for compressed air, to convey water and non-aggressive fluids in various industrial and agricultural applications.

Multi-service hose
Excellent ageing properties
Flexible for easy handling

Tube:
black, seamless synthetic rubber compound.

Reinforcement:
high strength synthetic fabrics.

Cover:
black, seamless synthetic rubber compound, ageing and weathering resistant.

Temperature:
from -25°C (-13°F) to +80°C (+176°F).

Branding:
IVG RUBBER HOSE AIR- WATER 20 BAR W.P.
SIZE - BATCH NUMBER.



Air Water 20



| Code | Inside diameter | | Outside diameter | | Working pressure | | Burst pressure | | Weight nominal | | Bending radius | | Length max | |
|---------|-----------------|-------|------------------|------|------------------|-----|----------------|-----|----------------|--------|----------------|------|------------|-----|
| | mm | inch | mm | inch | bar | psi | bar | psi | kg/m | lbs/ft | mm | inch | m | ft |
| 1447432 | 6 | 17/72 | 14 | 0,55 | 20 | 300 | 60 | 900 | 0,17 | 0,11 | 60 | 2,4 | 100 | 328 |
| 1447440 | 7 | 8/29 | 16 | 0,63 | 20 | 300 | 60 | 900 | 0,22 | 0,15 | 60 | 2,4 | 100 | 328 |
| 1447459 | 8 | 5/16 | 17 | 0,67 | 20 | 300 | 60 | 900 | 0,24 | 0,16 | 65 | 2,6 | 100 | 328 |
| 1447467 | 10 | 25/64 | 19 | 0,75 | 20 | 300 | 60 | 900 | 0,28 | 0,19 | 80 | 3,2 | 100 | 328 |
| 1447475 | 13 | 1/2 | 23 | 0,91 | 20 | 300 | 60 | 900 | 0,39 | 0,26 | 105 | 4,1 | 60 | 200 |
| 1447483 | 16 | 5/8 | 26 | 1,02 | 20 | 300 | 60 | 900 | 0,45 | 0,30 | 130 | 5,1 | 60 | 200 |
| 1447491 | 19 | 3/4 | 30 | 1,18 | 20 | 300 | 60 | 900 | 0,58 | 0,39 | 150 | 5,9 | 60 | 200 |
| 1447505 | 25 | 1 | 37 | 1,46 | 20 | 300 | 60 | 900 | 0,77 | 0,52 | 200 | 7,9 | 40 | 131 |

Recommended Couplings:



Rapid



Giroexp/S

