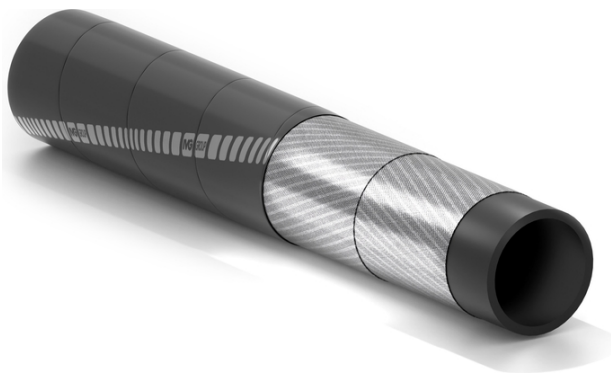


# LPG CM EN 1762:1997

## Gas delivery hose



**Specifications:**  
EN 1762:1997.

**Application:**

steel cord hose suitable for the delivery of liquefied petroleum gas, LPG (liquid or gas) and natural gas.

Reinforcement with metallic fabrics  
For LPG and LNG  
Flexible for easy handling



**Tube:**

extruded, black, smooth, synthetic rubber.

**Reinforcement:**

plies of steel wire cord.

**Cover:**

black, smooth (wrapped finish), synthetic rubber, weathering and ozone resistant. Pin pricked cover to allow gas permeation.

**Temperature:**

from -30°C (-22°F) to +100°C (+212°F).

**Electrical resistance:**

electrical resistance below  $1 \times 10^2 \Omega$ ; on service length assured through the connection between the steel wires and fitted couplings (type M).

**Branding:**

continuous yellow brand "IVG - EN 1762:1997 - Type D - I.D....W.P...bar - M - quarter and year of production".



# LPG CM EN 1762:1997



| Code    | Inside diameter |       | Outside diameter |      | Working pressure |     | Burst pressure |      | Weight nominal |        | Bending radius |      | Length max |     |
|---------|-----------------|-------|------------------|------|------------------|-----|----------------|------|----------------|--------|----------------|------|------------|-----|
|         | mm              | inch  | mm               | inch | bar              | psi | bar            | psi  | kg/m           | lbs/ft | mm             | inch | m          | ft  |
| 1435566 | 13              | 1/2   | 26               | 1,02 | 25               | 367 | 100            | 1470 | 0,58           | 0,39   | 100            | 3,9  | 60         | 200 |
| 1410148 | 25              | 1     | 38               | 1,50 | 25               | 367 | 100            | 1470 | 1,01           | 0,68   | 200            | 7,9  | 60         | 200 |
| 1410911 | 32              | 1-1/4 | 45               | 1,77 | 25               | 367 | 100            | 1470 | 1,23           | 0,83   | 250            | 9,9  | 60         | 200 |
| 1421085 | 50              | 2     | 66               | 2,60 | 25               | 367 | 100            | 1470 | 2,23           | 1,50   | 400            | 15,7 | 60         | 200 |

### Recommended Couplings:



Thread coupling EN 14420-5 (DIN 2817)



Camlock EN 14420-7 (DIN 2828)



Safety clamps EN 14420-3 (DIN 2817)

## SPECIAL DETAILS

### WARNINGS AND PRECAUTIONS

Rubber hoses have a service life proportional to their usage.

The equipment and systems where the hose is installed must be designed to ensure safe operation. Given the wide range of possible applications, IVG Colbachini does not guarantee suitability for all specific uses. The selection of the most appropriate product for the intended application, ensuring the required performance and safety standards, is the sole responsibility of the user.

IVG Colbachini shall therefore not be held liable for any use other than those indicated in its catalogues, product data sheets, quotations, order confirmations, or any accompanying recommendations.

Improper product selection and/or use, or failure to comply with installation, operation, maintenance, and storage procedures, may result in hose failure and cause damage to property or personal injury.

---

IVG Colbachini manufactures and markets both assembled hoses and hoses supplied without fittings.

#### Assembled Hoses

Before being placed on the market, the hose assembly is subjected by IVG to manufacturing control tests carried out by qualified personnel.

IVG declines all responsibility for any subsequent modifications, disassembly, or reinstallation of fittings performed by the user, as well as for uses that differ from those indicated in the product data sheet or in the absence of maintenance programs and periodic inspections.

#### Hoses and Fittings as spare parts

The user is responsible for assembling the hose and fittings, ensuring proper hose/fitting compatibility and compliance with the technical specifications for use. It is recommended that the hose assembly be subjected to a pressure tightness test carried out by qualified personnel.

IVG declines all responsibility in this regard.

#### Precautions

For proper selection and correct use of IVG products, reference should also be made to the recommendations issued by Assogomma, available at [www.ivgspa.it](http://www.ivgspa.it), in accordance with ISO 8331 regarding installation, maintenance, methods and duration of use, as well as fitting stability and tightness.

**For safety reasons, the working pressure indicated in the product technical data sheet must never be exceeded.**

**In general, continuous operation at maximum allowable pressure and/or temperature may significantly reduce the hose service life. Regular inspections and hydrostatic testing at the specified test pressure must therefore be carried out. Hydrostatic tests must be performed by adequately trained personnel using suitable equipment and in accordance with recognized testing standards.**

For specific applications of rubber hoses, reference should be made to applicable legal requirements or compliance standards. Additional recommendations are available for particularly critical applications. For further information, please contact [info@ivgspa.it](mailto:info@ivgspa.it).